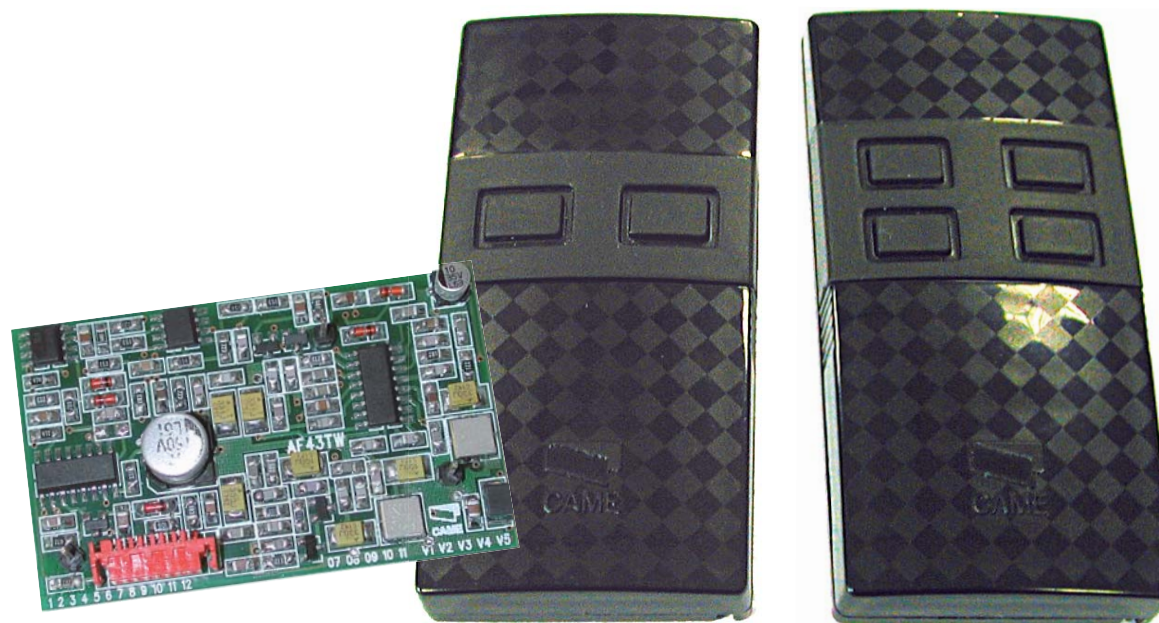


TRANSMITTER

TWIN

(in Key-Block Mode)



**Encoding and
maintenance instructions**

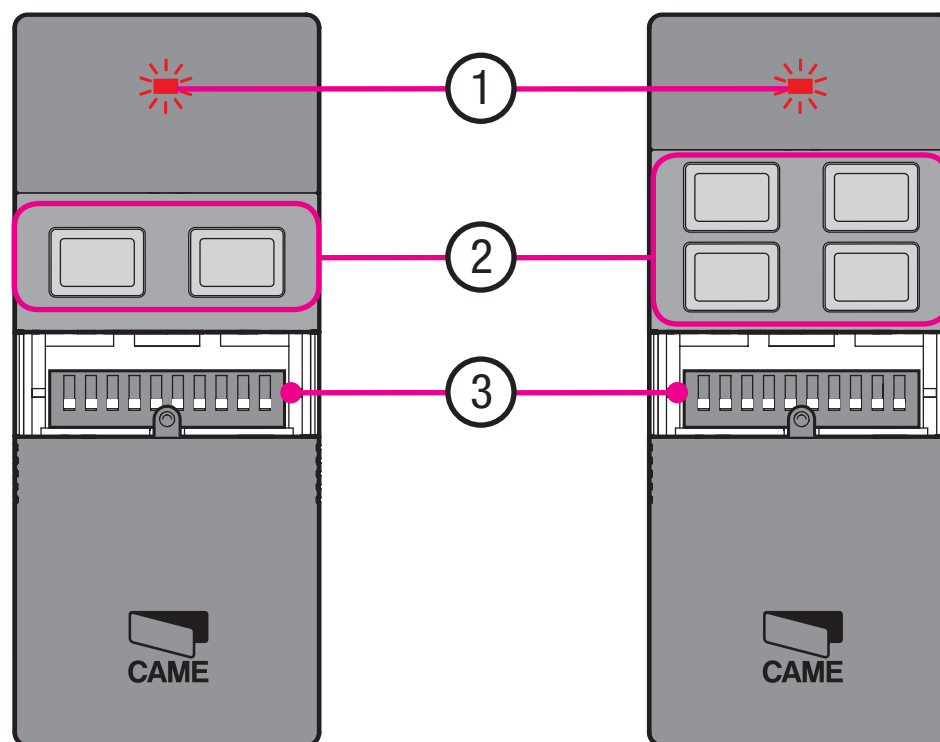
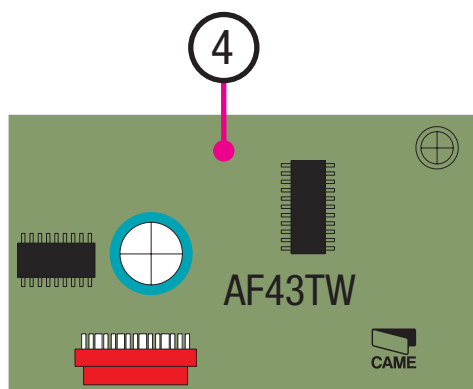
1 Description

A radio system, that thanks to its self-learning mode is compatible with CAME TOP and TAM series, 433.92 Mhz transmitters.

Allows you to insert a password using a 10-way Dip-switch, to prevent copying of Key-Block code.

This product is engineered and manufactured by CAME CANCELLI AUTOMATICI S.p.A. and is guaranteed 24 months if not tampered with.

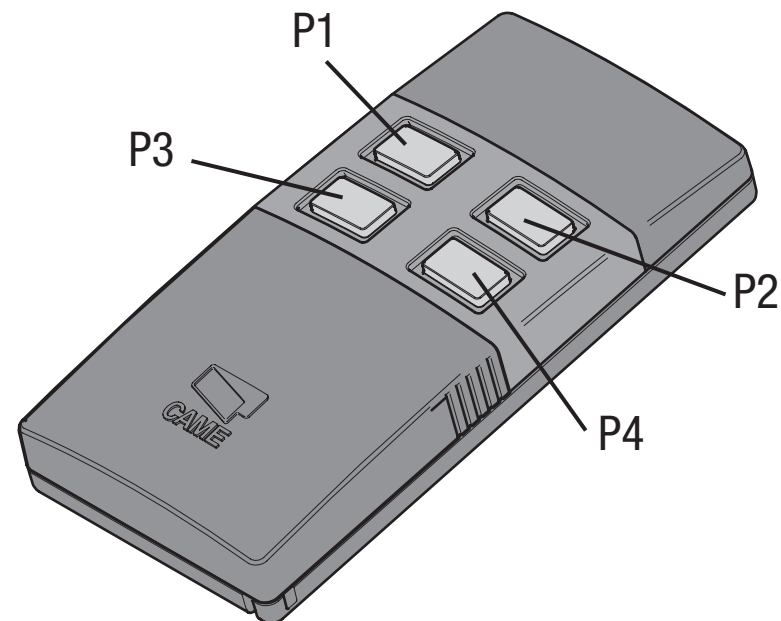
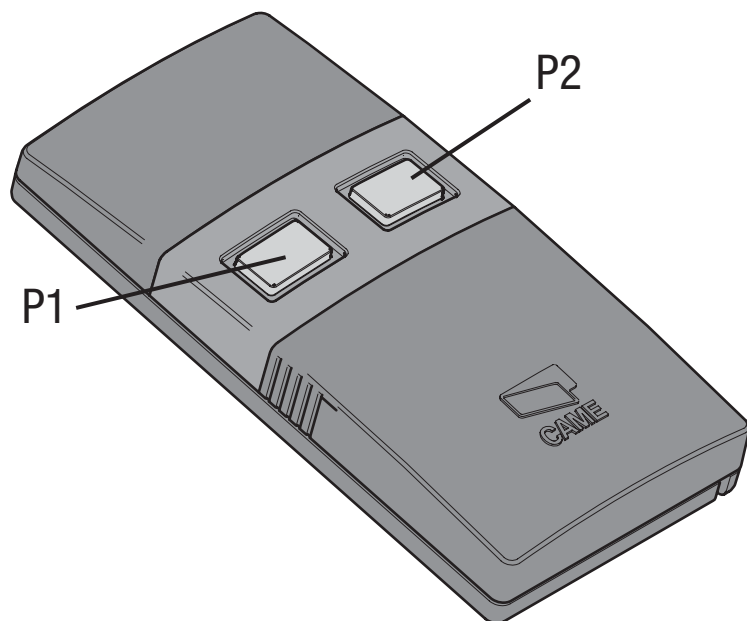
- 1- Signalling LED
- 2- Buttons
- 3- Password inputing Dip-switch
- 4- AF43TW radio receiver card



2 Compatibility

You can associate different encodings for each button. Each encoding is distinguishable by a different flashing:

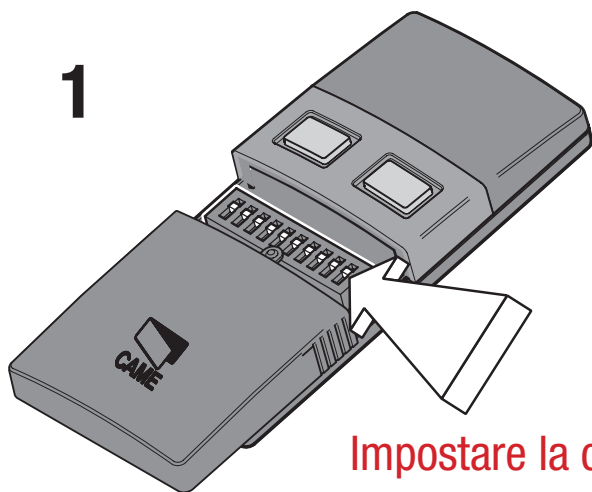
- 1 - TAM Encoding (factory settings) – two flashes plus a pause
- 2 - TOP encoding: continuous flashing
- 3 - Key-Block encoding: three flashes plus a pause



WARNING!! WITH THIS PROCEDURE ALL THE BUTTONS ARE PROTECTED BY THE KEY-BLOCK MODE.

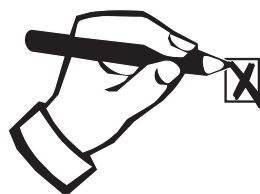
These buttons may not be duplicated onto another transmitter without knowing the password.

1



Impostare la chiave sul
Dip Switch del trasmettitore

Choose the required ON/OFF combination and write it into the apposite grille to save it:



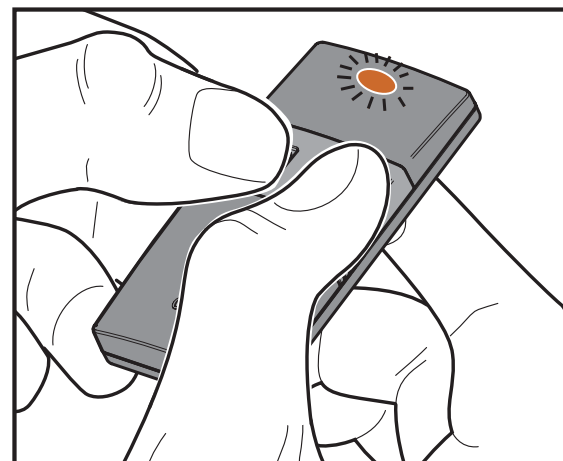
| | | | | | | | | | | |
|--------------------------|--------------------------|--------------------------|--------------------------|--------------------------|--------------------------|--------------------------|--------------------------|--------------------------|--------------------------|------------|
| <input type="checkbox"/> | <input type="checkbox"/> | <input type="checkbox"/> | <input type="checkbox"/> | <input type="checkbox"/> | <input type="checkbox"/> | <input type="checkbox"/> | <input type="checkbox"/> | <input type="checkbox"/> | <input type="checkbox"/> | ON |
| <input type="checkbox"/> | <input type="checkbox"/> | <input type="checkbox"/> | <input type="checkbox"/> | <input type="checkbox"/> | <input type="checkbox"/> | <input type="checkbox"/> | <input type="checkbox"/> | <input type="checkbox"/> | <input type="checkbox"/> | OFF |
| 1 | 2 | 3 | 4 | 5 | 6 | 7 | 8 | 9 | 10 | |

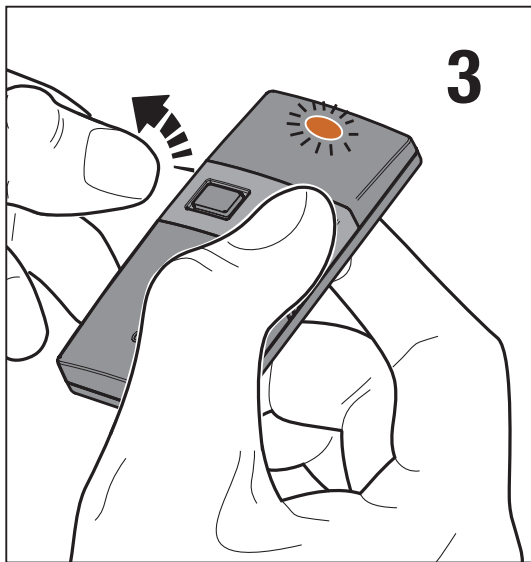
(AT LEAST 1 DIP SWITCH ON!)

2

Keep buttons 1 and 2 pressed.
The LED flashes slowly.

After 5 s the LED starts flashing quickly.

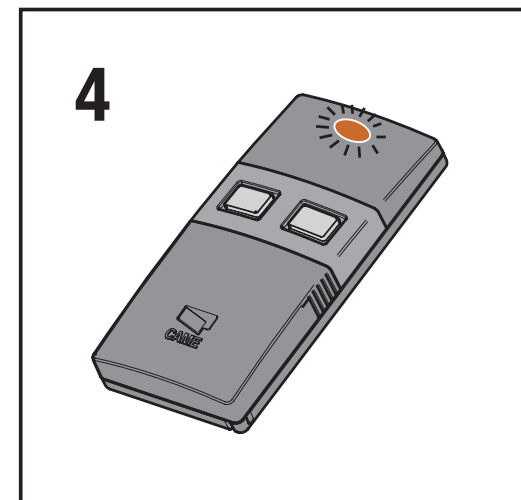




Release **only** button 1: the LED keeps on flashing quickly for about 4 s.

Once 4 s have elapsed the LED stay on continually – at this point you can also release button 2.
The code which has been set using the Dipswitches is now stored in memory.

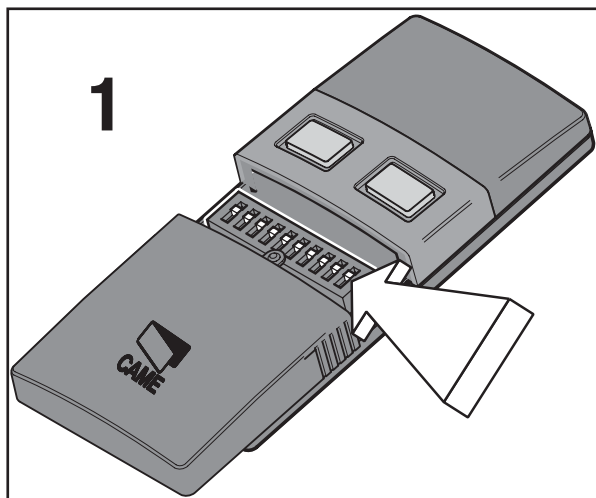
RESET ALL THE DIP-SWITCHES TO OFF!!
Always do this procedure for the transmitter to work.



Warning!! To make the transmitter functional again and to avoid any correspondence between the stored password and the Dip-switches (the code could be detected) set the Dip-switches to OFF at the end of the procedure.

4 Key-Block mode duplication

To duplicate the buttons from a TWIN transmitter in Key-Block mode to another TWIN transmitter:



1 - Set the password on the already active transmitter (to allow copying onto the new transmitter).

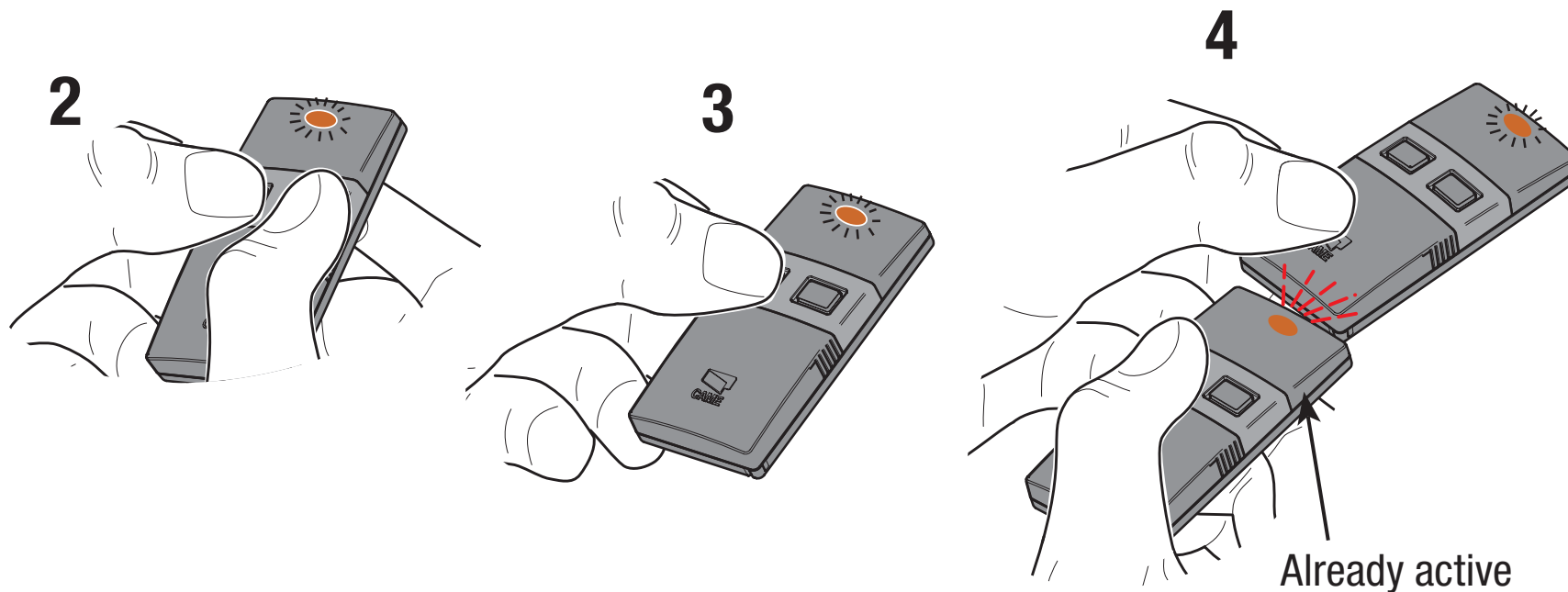
2 - On the new transmitter press buttons P1 and P2 simultaneously until the LED flashes more quickly;

3 - then press the button you wish to activate (the LED stays on);

4 - within 10 seconds rest the already encoded transmitter, to its back part, while pressing the button you wish to duplicate for a few seconds.

Once memorised, the LED on the just-activated transmitter will flash 3 times.

Repeat 2, 3 and 4 for the other buttons as well.



RESET THE DIPSWITCHES TO OFF!!
Always do this procedure for the transmitter to work.

Warning!!
The code is copied even if the new TWIN is already Key-Block encoded.
In this case the procedure simply overwrites the encoding.

Example 1: INSTALLED SYSTEM with TOP or TAM transmitters.

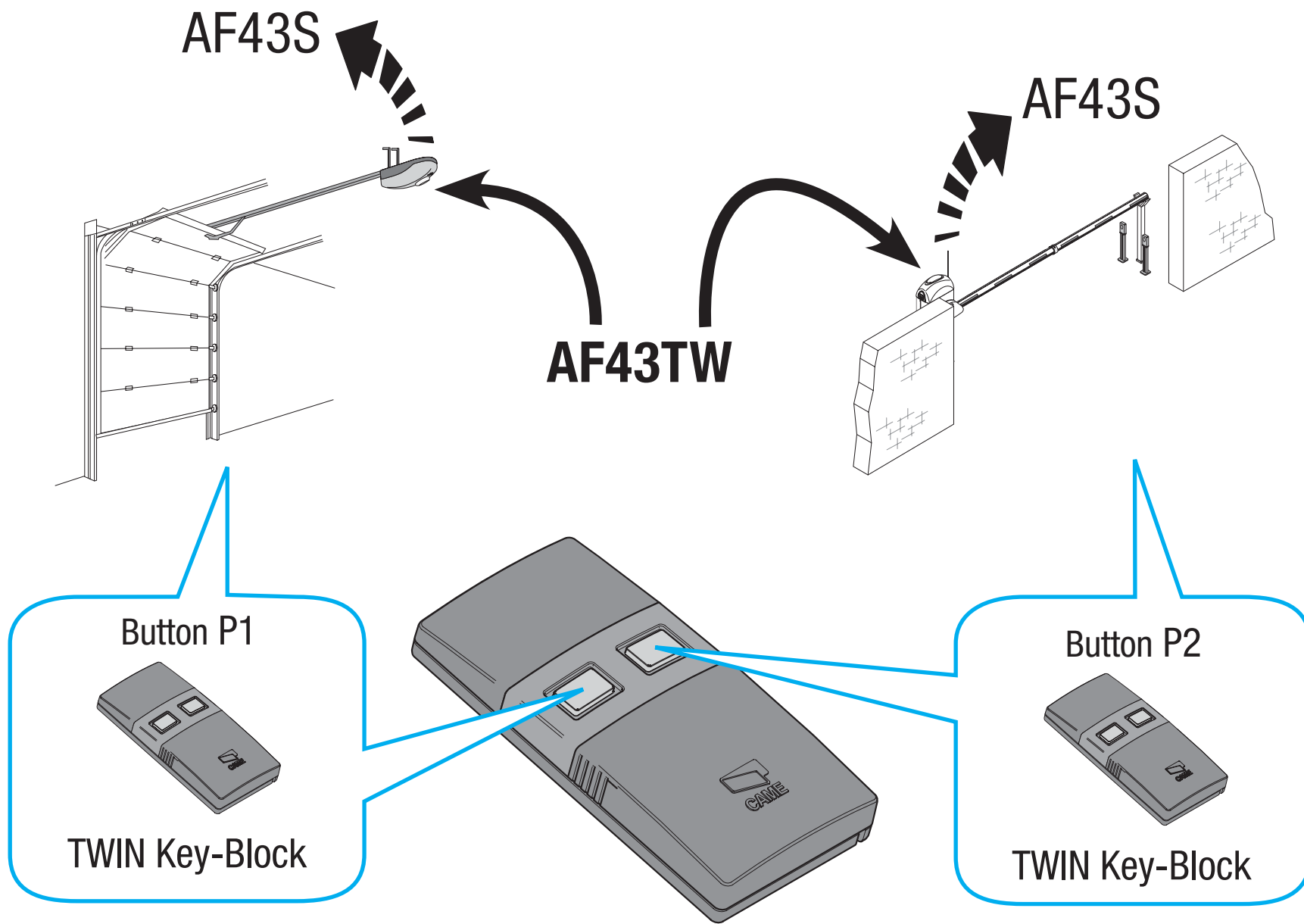
Scope: to transform the entire system into Key-Block mode

Steps to follow:

- replace the (AF43S) frequency card in the automations, with the new AF43TW.
- insert the password into a TWIN transmitter as per pag. 4-5.
- memorise the new encoding on the automation receivers with the new AF43TW card (see relative instructions).
- replace the TOP and TAM transmitters, duplicating the TWIN in Key-Block mode as per pag. 6-7.

In this way, anybody needing a copy of the TWIN transmitter to command the automation device, will have to address the installer or dealer that has the password.

EXAMPLE 1



EXAMPLE 2: INSTALLED SYSTEM WITH TOP AND TAM TRANSMITTERS.

Scope: to add a new automation device with Key-Block mode transmitter.

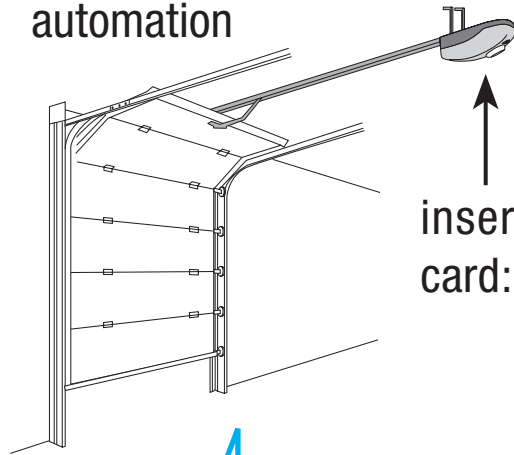
Steps to follow:

- insert the AF43TW frequency card in the automation devices to be used with the Key-Block encoded transmitters.
- insert the password on a TWIN transmitter as per pag. 4-5.
- memorise the encoding on the receiver of the automation with the new AF43TW card (see relative instructions).
- duplicate the TWIN transmitters in Key-Block mode as per pag. 6-7.
- duplicate the TOP and TAM encoding on a button of the TWIN transmitter (see procedure on the TOP and TAM ticket).

In this way, anybody needing a copy of the TWIN transmitter to command the barrier will have to address the installer or dealer that has the password.

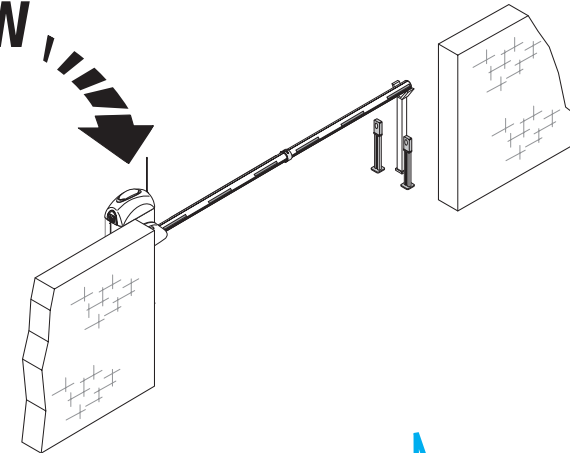
Esempio 2

Already installed automation

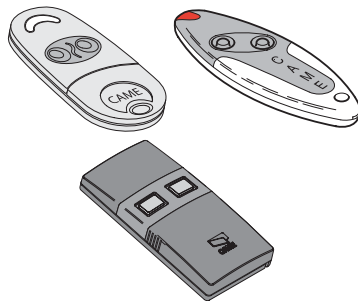


inserted frequency card: AF43S

New automation
AF43TW

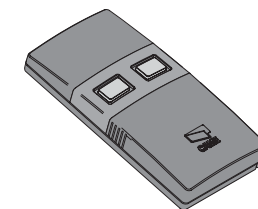


Button P1



Transmitters encoded in TAM or TOP mode.

Button P2



TWIN Key-Block

Example 3: NEW INSTALLATION

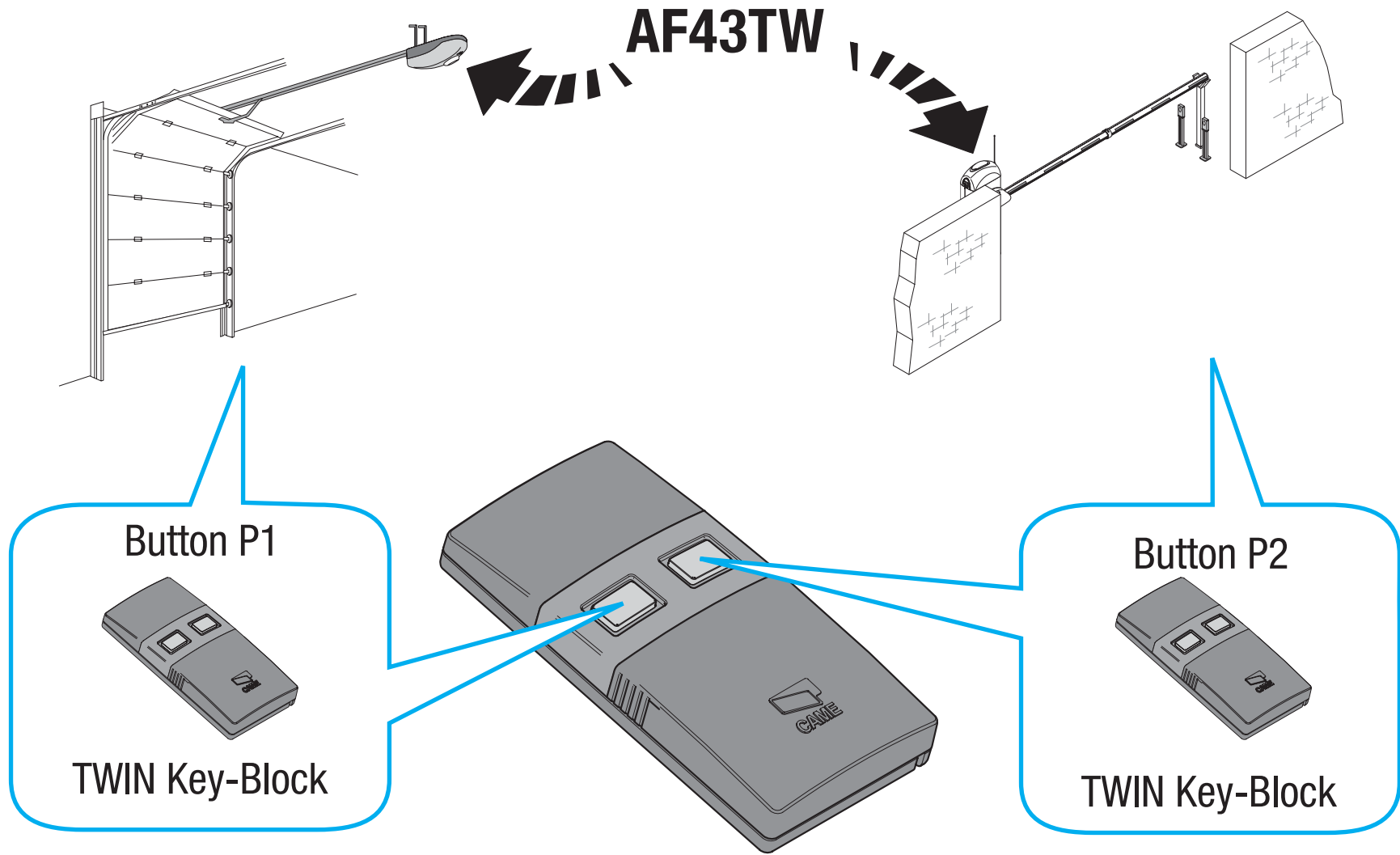
Scope: to create a system only with Key-Block mode transmitters

Steps to follow:

- insert the AF43TW frequency card into all the automation devices.
- insert the password in one TWIN transmitter as per pag. 4-5.
- memorise the new encoding on the receivers of the automation with the new AF43TW card (see relative instructions).
- duplicate the TWIN transmitters in Key-Block mode as per pag. 6-7.

In this way, anybody needing a copy of the TWIN transmitter to command the automation device, will have to address the installer or dealer that has the password.

Example 3





English - Manual code: **119RU68** ver. **1.0** 09/2007 © CAME cancelli automatici s.p.a.

The data and information reported in this installation manual are susceptible to change at any time and without obligation on CAME cancelli automatici s.p.a. to notify users.

